

Undergraduate Financial Assistance Fund 2022/23 Report

The University's Financial Assistance Committee provides a report following each academic year outlining the financial assistance provided to undergraduate students for the previous academic year. The following data is for the academic year 2022/23.

Please note that numbers of 3 and below are suppressed (<3) in order that individual students cannot be identified.

Contents

1. Overview of the Fund
2. Application outcomes
3. Award values
4. Applications by College
5. Applications by fee status
6. Applications by course
7. Reason for financial difficulties (successful applications)
8. Reasoning behind unsuccessful applications

1. Overview of the Fund

The Undergraduate Financial Assistance Fund provides financial assistance to undergraduate students in unforeseen financial need. The awards are intended to support students who would otherwise be unable to complete their course of study.

In 2022/23, the Fund provided awards of up to £3,500 to assist students with their living costs. The maximum award was exceptionally increased from £2,000 to £3,500 to acknowledge the impact of the Cost of Living crisis on students.

2. Application outcomes

Figure 2a. Bar chart to show the breakdown of applications received by term in 2022/23.

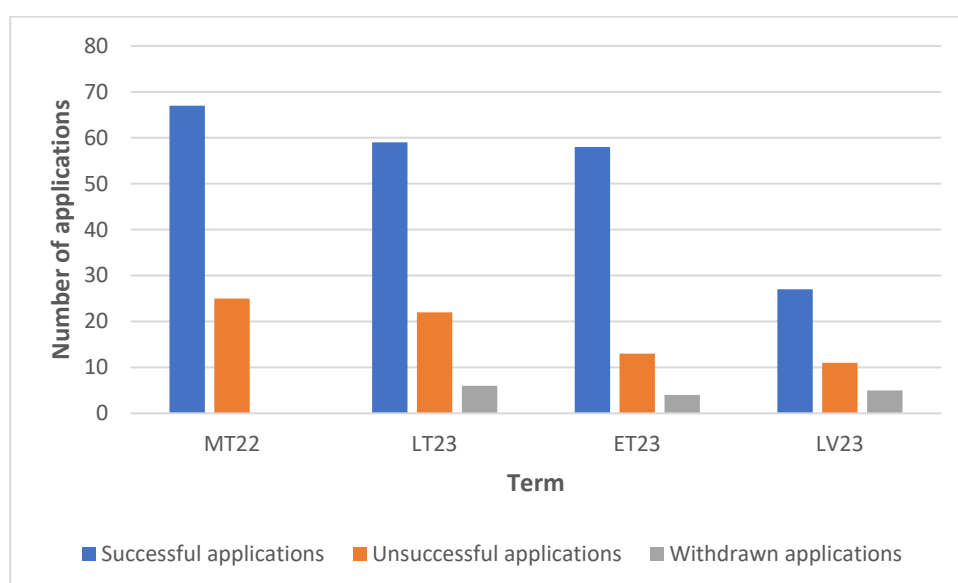


Figure 2b. Table to show the breakdown of applications received by term in 2022/23.

Outcome	MT22	LT23	ET23	LV23	2022/23
Successful applications	67	59	58	27	211
Unsuccessful applications	25	21	13	11	70
Withdrawn applications	<3	5	<3	4	11
Total	92	85	73	42	292

3. Award values

Figure 3a. Bar chart to show the breakdown of the values of awards in 2022/23.

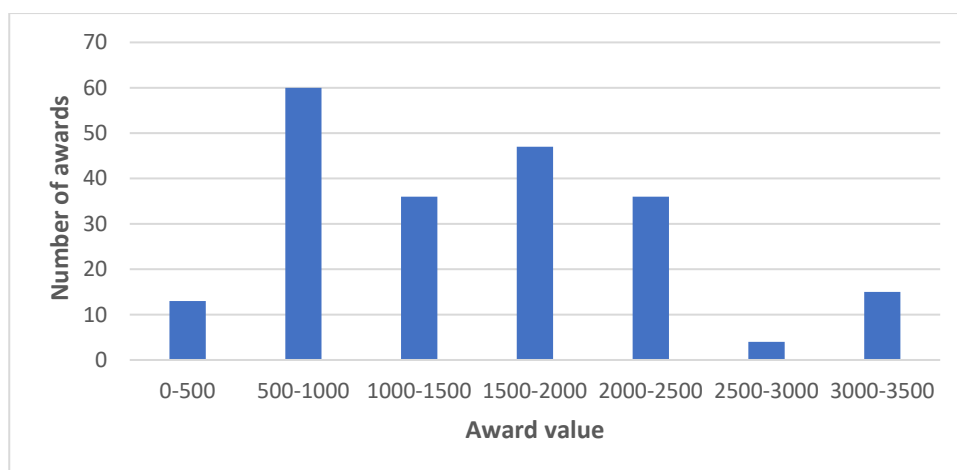


Figure 3b. Table to show the breakdown of the values of awards in 2022/23.

Award value	Total awards	Total award value
£0-£500	13	£4,864
£500-£1000	60	£40,925
£1000-£1500	36	£41,243
£1500-£2000	47	£73,302
£2000-£2500	36	£73,059
£2500-£3000	4	£10,700
£3000-£3500	15	£51,931
Total	211	£296,024

4. Applications by College

Figure 4a. Bar chart to show breakdown of applications by College in 2022/23.¹

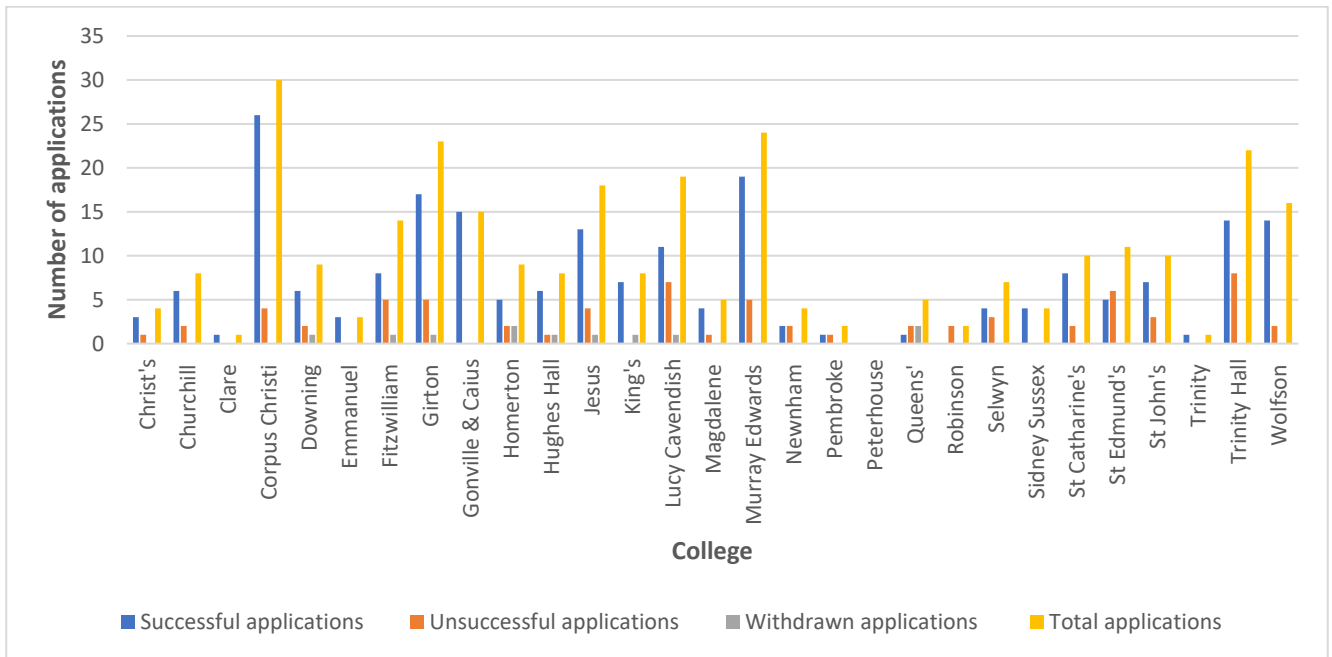


Figure 4b. Table to show breakdown of applications by College in 2022/23.

College	Successful applications	Unsuccessful applications	Withdrawn applications	Total applications
Christ's	<3	<3	<3	4
Churchill	6	<3	<3	8
Clare	<3	<3	<3	<3
Corpus Christi	26	4	<3	30
Downing	6	<3	<3	9
Emmanuel	<3	<3	<3	<3
Fitzwilliam	8	5	<3	14
Girton	17	5	<3	23
Gonville & Caius	15	<3	<3	15
Homerton	5	<3	<3	9
Hughes Hall	6	<3	<3	8
Jesus	13	4	<3	18
King's	7	<3	<3	8
Lucy Cavendish	11	7	<3	19
Magdalene	4	<3	<3	5
Murray Edwards	19	5	<3	24
Newnham	<3	<3	<3	4
Pembroke	<3	<3	<3	<3
Peterhouse	<3	<3	<3	<3

¹ Applicants state their College in the application form as it is needed to administer the application. However, as stated recently in Varsity:

“The University Financial Assistance Fund does not screen by College, or prioritise one over another. It responds to requests on demand. In submitting an application, individual students need to have the support of their College tutor and declare whether they are in receipt of other sources of financial assistance (this may include separate hardship funds provided by their College). The University Hardship Fund doesn't know whether an applicant is state or privately educated. It makes awards on the basis of individual need, and treats each application fairly.”

College	Successful applications	Unsuccessful applications	Withdrawn applications	Total applications
Queens'	<3	<3	<3	5
Robinson	<3	<3	<3	<3
Selwyn	4	<3	<3	7
Sidney Sussex	4	<3	<3	4
St Catharine's	8	<3	<3	10
St Edmund's	5	6	<3	11
St John's	7	<3	<3	10
Trinity	<3	<3	<3	<3
Trinity Hall	14	8	<3	22
Wolfson	14	<3	<3	16
Total	211	70	11	292

5. Applications by fee status

Figure 5a. Bar chart to show breakdown of applications by fee status in 2022/23².

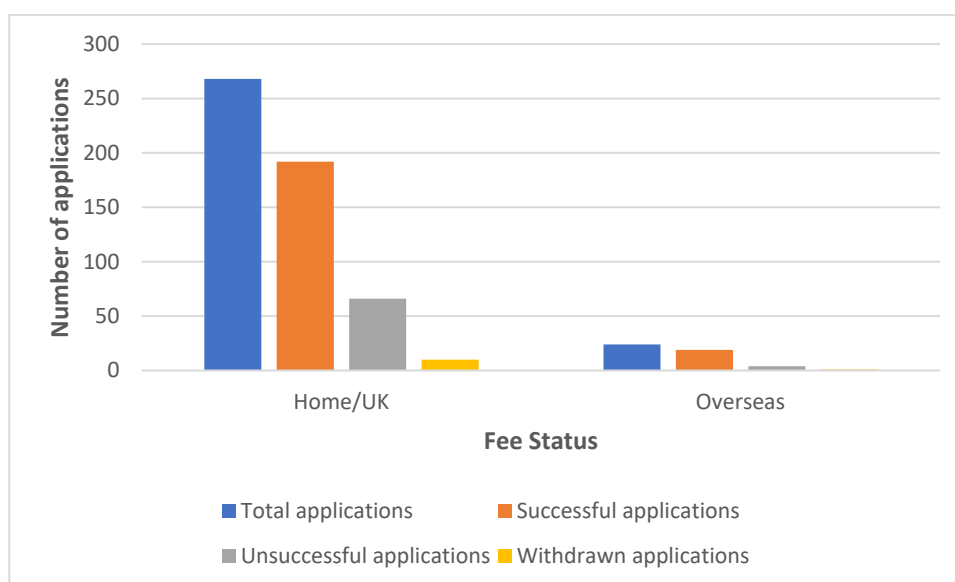


Figure 5b. Table to show breakdown of applications by fee status in 2022/23.

Fee status	Successful applications	Unsuccessful applications	Withdrawn applications	Total applications
Home/UK	192	66	10	268
Overseas	19	4	<3	24
Total	211	70	11	292

² Please note that students are placed at no advantage or disadvantage if they are Home/UK or Overseas.

6. Applications by course

Figure 6a. Bar chart to show breakdown of applications by course in 2022/23.

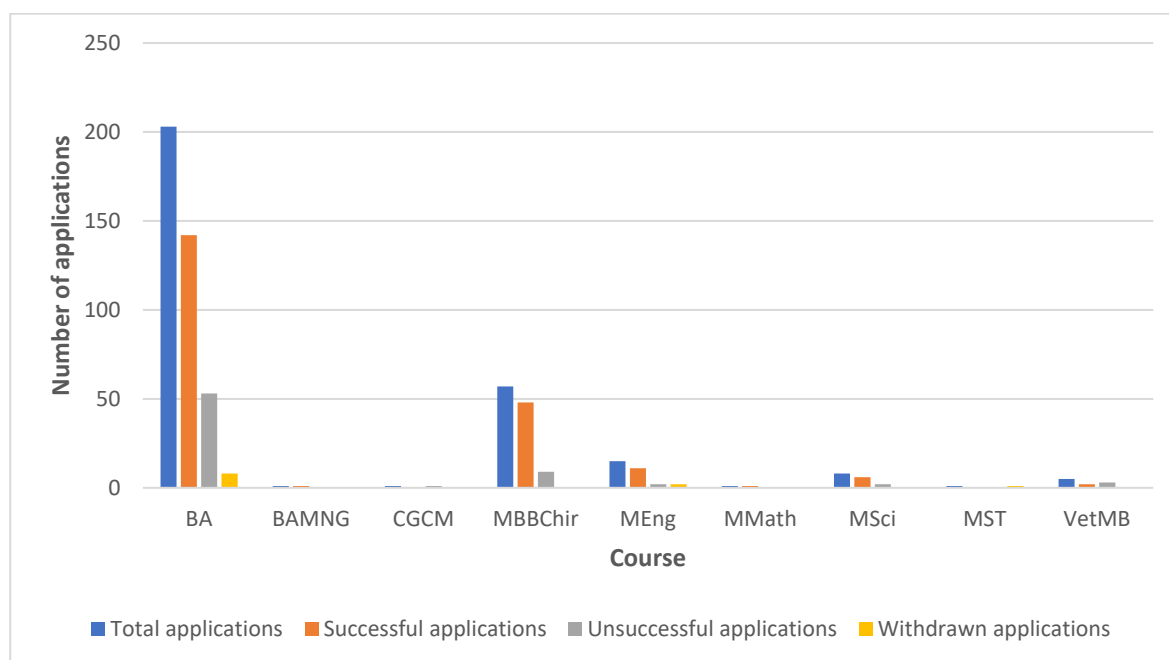


Figure 6b. Table to show breakdown of applications by course in 2022/23.

Course	Successful applications	Unsuccessful applications	Withdrawn applications	Total applications
BA	142	53	8	203
BAMNG	<3	<3	<3	<3
CGCM	<3	<3	<3	<3
MBBChir	48	9	<3	57
MEng	11	<3	<3	15
MMath	<3	<3	<3	<3
MSci	6	<3	<3	8
MST	<3	<3	<3	<3
VetMB	<3	<3	<3	5
Total	211	70	11	292

7. Reason for financial difficulties (successful applications)

The main reasons for the financial difficulties experienced by students with a successful application in 2022/23 were the following:

- Cost of Living crisis
- Parents less able to support
- Family circumstances, for example, a bereavement

8. Reasoning behind unsuccessful applications

70 applications were unsuccessful with applications being declined due to not meeting the eligibility criteria of the Fund, as published on the webpages available on the Cambridge Students website.

The main reasons include the following:

- The student had not accessed the support available from Student Loans and the Cambridge Bursary Scheme.
- The student had declared savings in their application form which were sufficient enough to meet their financial shortfall.
- The student's circumstances were due to a short-term cashflow issue, and their circumstances were therefore more suited to the Loan Fund One.
- The student was applying for support with IT equipment costs.